

# SPANISH 1340

Department of Humanities and Foreign Languages  
Valencia College – East Campus

**Course Name:** SPN 1340 Spanish for Heritage Speakers 1    **Semester:** Fall 2015 (Ten-Week Course)  
**Location:** Building 4, Room 147, & Online    **Credit Hours:** 4 Credit Hours  
**Days:** Tuesdays & Thursdays    **Time:** 10:00am to 11:40am

## Instructor Contact Information:

**Instructor:** Professor Juan-Alberto Salto

**Office Phone:** (407) 582-2083

**E-mail:** [jsalto@ValenciaCollege.edu](mailto:jsalto@ValenciaCollege.edu)

Instructor's preferred contact is email. Emails will be answered within 48 hours, Monday through Friday (with the exception of Professor's Virtual Hours below). If you send an email on the weekend, expect it to be answered on the next business day.

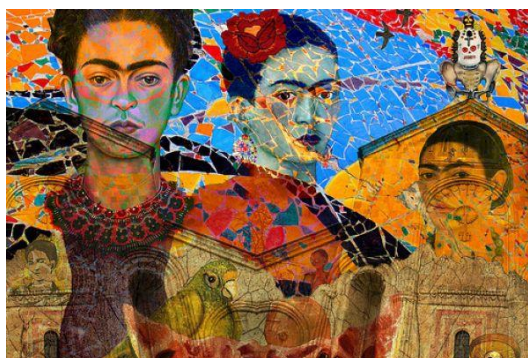
**Office:** Building 3 – Room 129

## Office Hours:

Monday	9:00 am to 9:50 am; & 5:45 pm to 6:30 pm
Tuesday	9:00 am to 10:00 am; & 12:00 pm to 1:00 pm
Wednesday	9:00 am to 9:50 am; & 5:45pm – 6:30pm
Thursday	9:00 am – 10:00 am
<b>Virtual Hours</b>	Via E-mail on Fridays from 9:00 am to 1:00 pm
	OR By Appointment via E-mail.

*¡Bienvenidos!* Welcome to Spanish 1340.

Heritage language is the language which was first for an individual with respect to the order of acquisition but has not been completely acquired because of the switch to another dominant language.”      Maria Polinsky



## Course Description & Learning Objectives

### PREREQUISITE: NONE

This course requires self-discipline and time commitment. This course requires completion of online homework assignments on the **MySpanishLab platform** (<http://www.pearsonmylabandmastering.com/northamerica/mylanguage labs/>) as well as online Discussion posts & other assignments/ activities on **Blackboard** (<https://learn.valenciacollege.edu/>). Keep up with the pace of the course as it is a Ten-Week course, don't forget to ask for help as soon as you feel you need it.

**COURSE DESCRIPTION: SPANISH FOR HERITAGE SPEAKERS** This course is designed for heritage speakers of Spanish who have acquired oral proficiency in a non-academic environment. The activities in this course will improve several aspects of language learning: oral comprehension, speaking, reading comprehension and analysis, and writing skills. The emphasis will be on improving linguistic skills through specific grammatical and lexical studies designed to meet the particular needs of heritage speakers of Spanish with a special attention to Hispanic culture. A minimum grade of "C" is required if being used to satisfy the General Education Foreign Language Proficiency Requirement.

### RATIONAL FOR COURSE:

The course emphasizes the mastery of writing, reading and oral communication skills, with particular attention given to the issues of interference of English, code switching, vocabulary building, orthography and reading comprehension. Students will write, make oral presentations and read materials of a cultural/literary nature, emphasizing the relationship between the culture of the United States and Hispanic culture.

### COURSE OBJECTIVES:

- Develop the ability to listen, derive meaning from, and communicate in formal Spanish.
- Improve command of spoken Spanish by correcting those errors common to Heritage Speakers.
- Write Spanish more coherently using correct patterns of standard grammar and syntax.
- Read Spanish with improved comprehension
- Develop professional/academic writing skills in Spanish.
- Expand your functional vocabulary, in particular, the language of the Hispanic professional/academic world.
- Promote a better understanding of the diversity of the Hispanic cultures in the USA and abroad
- Enhance comprehension and appreciation of the diversity and commonality of the Hispanic heritage from historic, social, political and artistic points of view.

### LEARNING OUTCOMES:

To successfully complete this course the students will be able to:

- Use a variety of communicative strategies while engaging in conversations within the Hispanic cultural/academic/professional environment understand the cultures and values of the Hispanic world within the context of the U.S. and Latin America.
- Assess the context of production of linguistic exchanges and command the different linguistic registers. used depending on the context (e.g. formal versus informal situations).
- Use critical thinking and problem solving skills while reading authentic materials in Spanish.
- Understand the key elements of writing, including grammar and writing formulas, and apply that knowledge to a wide range of texts in Spanish such as literary, journalistic, academic, technical and business related texts.
- Understand basic public speaking techniques and apply them in oral presentations.

## REQUIRED MATERIALS

The following materials are **REQUIRED TEXTS/ OTHERS** for this course:

### Required Material

- (1) **Textbook:** Español escrito: Curso para hispanohablantes bilingües (6th Edition).  
Author: Guadalupe Valdes, Richard V Teschner, Hector M Enriquez. ISBN 9780205945085 Pearson
- (2) Online Access Code to MySpanishLab (it is included with the purchase of the new textbook)  
(<http://www.pearsonmylabandmastering.com/northamerica/mylanguage labs/>)
- (3) Printed Copy of Syllabus

### Supplemental Texts

1. A full-size bilingual Spanish-English dictionary, (Cuyás, Collins, Larousse, Oxford, or Vox).
2. Christopher Kendris. 501 Spanish Verbs

### Technology Requirements

1. A reliable computer, either a PC running Windows XP or later, or a Mac running OS X or later
2. A sound card and speakers (or earphones)
3. A dependable Internet Service Provider (ISP) and a hi-speed modem (Cable or DSL strongly recommended to download audio and video without delays)
4. Webcam/microphone: Most computers come with an integrated microphone & webcam. If you do not own a webcam & microphone, you can have access to these using the Foreign Language Lab located in the East Campus in the first floor of building 4.

**NOTE:** It is your responsibility to purchase the correct version of the textbook (**the 6<sup>th</sup> Edition**) and online access code by the first week of class. If you do not have your book for in-class participation or access to the online homework you will lose participation and homework points.

## COURSE EVALUATION

Module/Chapter Quizzes (Top 4)	20%
'My Spanish Lab' Online Homework Activities	25%
Participation / In-class Activities / Readings	15%
Blackboard Discussions	15%
Presentations	10%
FINAL EXAM	15%

## GRADING SCALE

A: 90 – 100

B: 80 – 89

C: 70 – 79

D: 60 – 69

F: 0 – 59

### Spanish Course: Policies and Procedures

**Please read these policies carefully. It is your responsibility to ask questions about these policies and procedures if there is anything you do not understand.**

## PARTICIPATION POLICY

Attendance is mandatory and will be taken on a daily basis. You are responsible for all material and announcements made during class whether you are present or not. It is your responsibility to contact a classmate regarding missed activities and assignments.

**VERY IMPORTANT:** College policy requires that students who are not attending class the first week of classes to be withdrawn from the course. See the Withdrawal Policy below.

Each day your instructor will evaluate your class participation and record a score. Participation is an important

component of your final grade and an asset to your learning. If you miss class, no participation points can be awarded for that day, therefore you will receive a zero. You cannot make-up class participation. Daily participation is scored in the following manner. You should use this information during any discussion with your instructor regarding your classroom performance. Please NOTE *Participation* is Not simply just attending class.

2 POINTS	<u>Does All of the following:</u> arrives on time, attends entire class period, has textbook (and printed any extra material), is prepared for class, participates in activities, speaks Spanish in class, works well with others, and completes any written homework assigned by the instructor.
1 POINT	<u>Does Any <b>one</b> of the following:</u> arrives late, leaves early, does not have textbook (or did not print necessary extra material), does not participate in activities, speaks English in class, does not work well with others or is disrespectful.
0 POINTS	<u>Does <b>More than one</b> of anything listed in the 1 point description and/or any <b>one</b> of the following:</u> is absent or disruptive (does homework for other classes, checks cell phone (is texting or is on the phone), sleeps, etc.).

*Textbook Homework:* Read and prepare/practice assigned material in the textbook **before** the day it is due to be practiced in class in order to receive full credit for participation.

### ATTENDANCE POLICY

**ABSENCES:** You may miss class 1 times (the equivalent of ONE days) for **any** reason (e.g., medical, transportation issues, hospitalization, jury duty, military duty, funerals, personal, family, trips, emergency conditions, employment commitments, extra-curricular activities, other course commitments, etc.) without losing participation points. After the **first (1st)** absence, and for every subsequent absence, your participation grade will reflect that you have missed class. You cannot participate if you are not present in class. Participation points cannot be made up. Each day you are absent you miss information, so it is to your advantage to attend every day. Use these three allowed absences wisely. There are **NO** additional excused absences.

**TARDINESS:** Arriving late to class or leaving early disrupts the class and negatively impacts both the student and his/her classmates. The student's participation grade will be lowered according to the above scale.

Note: The instructor reserves the right to withdraw a student from the course due to numerous consecutive absences throughout the semester.

### ELECTRONIC DEVICES

Shut off or silence your cellular phones, pagers, iPods, iPads, and other electronic devices when you enter the classroom. They are **NOT allowed** during class time. If you are reading or sending text messages or checking your voicemail during class, it will be reflected in your participation grade; you will receive a '0' for participation that day. During an exam, any communication on electronic devices could be understood by your instructor as an attempt to send or receive information about the exam (see information about **Academic Dishonesty**).

### DISCUSSION BOARD

You are required to complete the activities listed in the discussion board, then to check regularly to review the responses of other students, and to add follow-up comments whenever applicable to contribute to a rich and deeper discussion. You will have a Discussion Post assignment due every week. I will be monitoring your progress and the quality of your responses throughout the course. To receive full credit you are required to post one original comment and reply to a minimum of 2 or more postings.

The guidelines to receive full credit for discussions are as follows:

- Post an original comment
- Read at least five other responses &      • Reply to a minimum of three (2) or more peers
- You are required to post on Wednesday before midnight and will have until Saturday to respond to other students. No late postings will be accepted.

- Observe the Rules of Netiquette when posting responses. For more information go to: <http://www.albion.com/netiquette/corerules.html>

## ORAL PRESENTATIONS

You will be using Photo Story®/iMovie or any format mentioned in the orientation for most oral presentations. If you do not know how to use the programs available for you, please refer to “Welcome to SPN 1340 – Orientation – Start HERE!!” tutorial which contains videos and written instructions. Remember that all oral presentations are to be recorded in Spanish. You must turn in a written document as part of your presentation.

## ONLINE HOMEWORK ACTIVITIES – My Spanish Lab

Online homework activities will be on Pearson’s MySpanishLab learning management systems. The activities assigned in MySpanishLab and other activities (textbook activities) are listed in the Calendar tab under “Assignment Calendar”. The activities assigned represent extensive grammar-driven practice that will assist students internalizing the language. These activities are graded and averaged as part of the overall grade. Homework will need to be completed by the dates that appear in MySpanishLab Calendar. Other assignments might be graded differently, depending on the type of activity. Late homework is not accepted.

## QUIZZES

**Quizzes:** All quizzes will be held in the room and class period in which class is held.

**QUIZZES:** There are five quizzes in this course (one per Module). Only your top four quiz scores will be used to calculate the final quiz percentage which will count for 20% of your total grade. Be aware that a make-up quiz will only be granted for legitimate extenuating circumstances with proper documentation provided by student (e.g. jury duty, funerals, military service, hospitalization, or religious holidays). The lowest quiz grade will be dropped at the end of the semester.

**FINAL EXAM:** You will take one final comprehensive exam per semester (which will cover all the material covered throughout the semester). **The date is listed on the Course Calendar.** Do not make other plans for that day and time. THE FINAL EXAM IS 15 % OF YOUR GRADE.

**IMPORTANT:** All tests and quizzes must be taken on dates assigned. No makeup tests or quizzes are available without explicit written consent of instructor, which will only be granted for legitimate extenuating circumstances with proper documentation provided by student (in a case of jury duty, funerals, military service, or religious holidays). The Final Exam must be taken on the date published for Final Exams.

## LANGUAGE LAB - TUTORING CENTER

The **Language Lab** / the tutoring center is available to any student enrolled in a Spanish class (or any foreign language course). **It is located in the library in Building 4, room 104.** It is designed to help students who need additional time or support in mastering concepts or answering specific topic-related questions. Tutors may answer questions related to online homework, such as confusion with instructions or a particular concept, but they cannot complete assignments for you. Be sure to come to the tutoring center with a particular question(s) in mind.

## REGISTRATION INFORMATION & WITHDRAWAL POLICY

1. It is also your (the student's) responsibility to withdraw from a course if you stop attending class. **You will NOT automatically be withdrawn from a course** if you simply stop attending class, you will still receive a grade at the end of the semester.
2. If you have questions about placement once you attend the first day of class, please talk to your instructor **immediately** and explain your concerns.

## WITHDRAWAL POLICY

- A. A student is permitted to withdraw from a class on or before the withdrawal deadline, as published in the College calendar. **the Withdraw deadline For Fall 2015 is listed in the Valencia Academic Calendar.** A student is not permitted to withdraw from a class after the withdrawal deadline.
- B. A faculty member is permitted to withdraw a student from the faculty member's class for violation of the faculty member's attendance policy with written notification to the student prior to the beginning of the final exam period, as published in the faculty member's syllabus. A faculty member is not permitted to withdraw a student from his or her class as a response to student conduct which falls under the jurisdiction of the Student Code of Conduct (6Hx28:10-03).
- C. A student who withdraws from a class before the withdrawal deadline will receive a grade of "W." A student who is withdrawn by a professor will receive a grade of "W." A student who is withdrawn for administrative reasons at any time will receive a grade of "W" or other grade as determined in consultation with the professor. Any student who withdraws or is withdrawn from a class during a third or subsequent attempt in the same course will be assigned a grade of "F". The grades of "WP" and "WF" **are eliminated.**
- D. A student who receives a grade of "W" will not receive credit for the course, and the W will not be calculated in the student's grade point average; however, the enrollment will count in the student's total attempts in the specific course.
- E. If a student withdraws from a class, the student may, upon request and only with the faculty member's permission (which may be withheld at any time in the sole discretion of the faculty member), continue to attend the course. If a student is withdrawn by a faculty member or is administratively withdrawn, the student is not permitted to continue to attend the class.

## RELIGIOUS HOLIDAYS

We would like to remind you of our make-up exam and excused absence policy for Religious Observances. Students who wish to observe an officially recognized religious holiday on a scheduled exam day will be allowed to take a make-up exam provided they **notify their instructor in writing in advance.** Absence on religious holidays will not count against the three excused absences you are allowed during the semester. If you will miss an exam or class to observe a religious holiday during the **Fall 2015** semester, please notify your instructor in writing at least two weeks in advanced.

## ACADEMIC DISHONESTY & STUDENT CONDUCT

### ACADEMIC DISHONESTY:

You are responsible for understanding what constitutes academic dishonesty which is set forth in the admission's catalogue and the student handbook. In this Spanish class — as in any class—each student must work **completely alone** on anything (homework, exams, quizzes, compositions) turned in for a grade. Therefore, the following cases would be included under academic dishonesty:

- Working with one or more other students on homework that is to be turned in for a grade, unless specifically directed to work in groups by the professor.
- Copying another student's homework, copying homework from other resources like the internet.
- Passing information about the content of an exam to another student.
- Using an online translation service to write a composition.
- Self-plagiarism: re-submitting previously submitted work from another course.

Violation of academic integrity includes copying homework or otherwise turning in work that is not original to you. Cheating in this case applies both to the copier and the person who allows his/her work to be copied. If students believe they are wrongfully graded they must approach their instructor with an explanation. We encourage you to study with others, but not to produce any work submitted for a grade under the direction of others (including internet resources or resources of any other kind). If a student's work is found to fit any of the academic dishonesty cases, **the assignment, quiz or exam submitted will automatically receive a grade of zero.** If a student is caught cheating on one activity in MySpanishLab the student will receive a 0 for all activities completed in that one Chapter, not just the single activity.

## STUDENT CONDUCT:

Valencia College is dedicated to promoting honorable personal and social conduct. By enrolling at Valencia, a student assumes the responsibility for knowing and abiding by the rules articulated in the Student Code of Conduct (6Hx28:10-03). The instructor reserves the right to refer students who engage in activities that are disruptive to the learning environment to the Dean of Students for disciplinary action. The following list, though not exhaustive, includes things which are disruptive to the learning environment:

- Use of any electronic devices including but not restricted only to: Cell phones, iPods, and laptop computers (documentation from OSD will be taken into consideration).
- Preparing homework for other courses during class.
- Engaging in private conversations in English with classmates while class is in session.
- Excessive tardiness
- Leaving and re-entering the classroom while the class is in session.
- Students are responsible for preparing for class by reading pre-assigned readings and completing assignments.
- Students who are absent are fully responsible for all material covered in class. Sending an e-mail will not be an excuse. Make sure you have the contact information of some of your classmates.
- Students should bring the textbook and any other material required for class.
- During exams, students may not leave the room or receive phone calls.

Emails with specific questions will be answered as soon as possible, usually within 24 hours (during week days).

Students who need more than a brief response should arrange a meeting with me during my office hours.

- In addition, Valencia College strives to provide a drug-free learning environment for all those involved in the academic experience. Our policy is as follows:

**POLICY:** In compliance with the provisions of the Federal Drug-Free Schools and Communities Act of 1989, Valencia College will take such steps as are necessary in order to adopt and implement a program to prevent the unlawful possession, use, or distribution of illicit drugs and alcohol by Valencia College students or employees on college premises or as part of any college activity.

## VALENCIA COLLEGE EXPECTED STUDENT CONDUCT: 10-03 STUDENT CODE OF CONDUCT

SPECIFIC AUTHORITY: 1006.60, FS.

LAW IMPLEMENTED: 1006.60, FS.

Valencia College is dedicated to the advancement of knowledge and learning, and to the development of responsible personal and social conduct. By enrolling at Valencia, a student assumes the responsibility for knowing and abiding by the rules of appropriate behavior as articulated in the Student Code of Conduct. The primary responsibility for managing the classroom environment rests with the faculty. Faculty may direct students who engage in inappropriate behavior that results in disruption of a class to leave the class. Such students may be subject to other disciplinary action which may include a warning, withdrawal from class, probation, suspension, or expulsion from the college. Please read the Student Code of Conduct in the current Valencia Student Handbook. Here is the link to Valencia's Student Code of Conduct website:

<http://valenciacollege.edu/generalcounsel/policy/default.cfm?policyID=180&volumeID=1=8&navst=0>

## ACCOMMODATIONS FOR STUDENTS WITH DISABILITIES

**STUDENTS WITH SPECIAL NEEDS:** Students with disabilities who qualify for academic accommodations must provide a Notification to Instructor (NTI) form from the Office for Students with Disabilities (OSD) and discuss specific needs with the professor, preferably during the first two weeks of class. The Office for Students with Disabilities determines accommodations based on appropriate documentation of disabilities. Please contact (campus phone number) for more information.

For east the number is Ph: 407-582-2229

Valencia College is interested in making sure all our students have a rewarding and successful college experience. To that purpose, Valencia students can get immediate help with issues dealing with stress, anxiety, depression, adjustment difficulties, substance abuse, time management as well as relationship problems dealing with school, home or work. BayCare Behavioral Health Student Assistance Program (SAP) services are free to all Valencia students and available 24 hours a day by calling (800) 878-5470. Free face-to-face counseling is also available.

---

### DISCLAIMER STATEMENT

This Syllabus may be altered, at the instructor's discretion, during the course of the term. It is the responsibility of the student to make any adjustments as announced.

**Any of the above information might be changed at the professor's discretion.**